

# Citrix Installationshinweise

Anleitung  
Stand: 06.05.2020



EPLAN Software & Service GmbH & Co. KG  
Technische Informationen

## Inhaltsverzeichnis

Systemvoraussetzungen .....	5
Betriebssysteme .....	5
Browser .....	5
Netzwerkvoraussetzungen .....	5
Hardware.....	5
Schritt für Schritt Anleitung.....	6
Download Workspace .....	6
Citrix Anmeldung.....	7
Citrix Rechner.....	9
Anhang .....	10
Verwendete Ports der Applikationen .....	10

Copyright © 2020 EPLAN Software & Service GmbH & Co. KG

EPLAN Software & Service GmbH & Co. KG assumes no liability for either technical or printing errors, or for deficiencies in this technical information and cannot be held liable for damages that may result directly or indirectly from the delivery, performance, and use of this material.

This document contains legally protected information that is subject to copyright, trademark law, design law and other legal provisions. All rights are protected. This document or parts of this document may not be copied or reproduced by any other means without the express prior consent of EPLAN Software & Service GmbH & Co. KG.

The software described in this document is subject to a licensing agreement and, if applicable, other contractual provisions. The utilization and reproduction of the software are only permitted in accordance with the specifications of this license agreement and, if applicable, any further existing contractual specifications.

RITTAL® is a registered trademark of Rittal GmbH & Co. KG.

EPLAN®, EPLAN Electric P8®, EPLAN Fluid®, EPLAN Preplanning®, EPLAN Pro Panel®, EPLAN Smart Wiring®, EPLAN Harness proD®, SYNGINEER and EPLAN Cogineer® are registered trademarks of EPLAN Software & Service GmbH & Co. KG.

Windows 7®, Windows 8.1®, Windows 10®, Windows Server 2008 R2®, Windows Server 2012®, Windows Server 2012 R2®, Microsoft Windows®, Microsoft Office®, Microsoft® Excel®, Microsoft® Access® and Notepad® are registered trademarks of the Microsoft Corporation (in accordance with the laws of the State of Washington).

PC WORX®, CLIP PROJECT®, INTERBUS® and PROFINET® are registered trademarks of Phoenix Contact GmbH & Co. KG.

AutoCAD® and AutoCAD Inventor® are registered trademarks of Autodesk, Inc.

STEP 7®, SIMATIC® and SIMATIC HW Config® are registered trademarks of Siemens AG.

InstallShield® is a registered trademark of InstallShield, Inc. FLEXERA SOFTWARE LLC.

Adobe® Reader® and Adobe® Acrobat® are registered trademarks of Adobe Systems Inc.

Intel® is a registered trademark of Intel Corporation.

Citrix® is a registered trademark of Citrix Systems, Inc.

TwinCAT® is a registered trademark of Beckhoff Automation GmbH.

Unity Pro® is a registered trademark of Schneider Electric S.E.

RSLogix 5000® and RSLogix Architect® are registered trademarks of Rockwell Automation Inc.

All other product names and trade names are trademarks or registered trademarks of their respective owners.

EPLAN uses the Open Source software 7-Zip (7z.dll), Version 16.00, Copyright © by Igor Pavlov. The source code of 7-Zip is subject to the GNU Lesser General Public License (LGPL). The source code of 7-Zip and details on this license can be found on the following Web site: <http://www.7-zip.org>

EPLAN uses the Open Source software Open CASCADE, Version 7.3.0, Copyright © by Open CASCADE S.A.S. The source code of Open CASCADE is subject to the Open CASCADE Technology Public License. The source code of Open CASCADE and details on this license can be found on the following website: <http://www.opencascade.org>

EPLAN makes an import function available which uses eCl@ss. The use of the eCl@ss standard is subject to a license and requires registration and downloading in the download portal: <http://www.eclssdownload.com>

EPLAN uses the dotNetRDF © library: <http://www.dotnetrdf.org>, Copyright (c) 2009-2013 dotNetRDF Project (dotnetrdf-develop@lists.sf.net). The source code is subject to the MIT license: <https://opensource.org/licenses/MIT>

EPLAN uses Google Chromium ©, Version 75. <https://www.chromium.org>, Copyright © 2015 The Chromium Authors. The source code is subject to the BSD license.

EPLAN uses the Chromium Embedded Framework ©, Version 3770.  
<https://bitbucket.org/chromiumembedded/cef>, Copyright © 2008-2014 Marshall A. Greenblatt. Portions Copyright © 2006-2009 Google Inc. The source code is subject to the BSD license.

EPLAN uses CEFSharp ©, Version 75. <https://cefsharp.github.io>, Copyright © The CefSharp Authors. The source code is subject to the BSD license.

EPLAN uses Microsoft Unity ©, Version 4.0.1. <https://github.com/unitycontainer/unity>, Copyright © Microsoft. The source code is subject to the Apache license, Version 2.0.

This application incorporates Open Design Alliance software pursuant to a license agreement with Open Design Alliance. Open Design Alliance Copyright © 2002–2018 by Open Design Alliance. All rights reserved.

EPLAN uses the PDFlib library, Version 9.2.0, Copyright © by PDFlib GmbH. Copyright reserved.

EPLAN uses the PLOP library, Version 5.3p1, Copyright © by PDFlib GmbH. All rights reserved.

The license management portion of this Licensee Application is based upon one or more of the following copyrights: Sentinel® RMS, © 2005 SafeNet, Inc., all rights reserved, and Sentinel® EMS, © 2009 SafeNet, Inc., all rights reserved. Sentinel® is a registered trademark of SafeNet, Inc.

EPLAN uses the the Open Source software QR Code generator library, Version 1.2.1.  
<https://www.nayuki.io/page/qr-code-generator-library>, Copyright © by Project Nayuki. The source code is subject to the MIT License.



EPLAN Software & Service GmbH & Co. KG  
An der alten Ziegelei 2  
40789 Monheim am Rhein · Deutschland  
Telefon: +49 (0) 21 73 / 39 64-0  
Telefax: +49 (0) 21 73 / 39 64-25  
Info@eplan.de · www.eplan.de

# Citrix Installationshinweise

## Systemvoraussetzungen

Die Installation der Software setzt Administrationsrechte voraus.

### Betriebssysteme

Windows 10 32-bit and 64-bit editions \*  
Windows 8.1, 32-bit and 64-bit editions (including Embedded edition)  
Windows 7, 32-bit and 64-bit editions (including Embedded edition)  
Windows Thin PC  
Windows Server 2016  
Windows Server 2012 R2, Standard, and, Datacenter editions  
Windows Server 2008 R2, 64-bit edition  
Windows Server 2019  
Windows 10 Enterprise 2016 LTSC 1607  
\*Supports Windows 10 Version 1607, 1703, 1709 and 1803.

### Browser

~~Internet Explorer (wird derzeit nicht unterstützt)~~  
Latest Google Chrome (benötigt StoreFront)  
Latest Mozilla Firefox  
~~Microsoft Edge (wird derzeit nicht unterstützt)~~

### Netzwerkvoraussetzungen

Diese Werte basieren auf EPLAN Erfahrungswerten!  
- Bandbreite: min. 50 Mbit/s (bei max. 12 Teilnehmern)  
- Latenz: max. 30ms

\* Für die verwendeten Applikationen sind Verbindungen außerhalb einer Proxy-Weiterleitung notwendig, die verwendeten Ports haben wir in einer Liste angehängt.

### Hardware

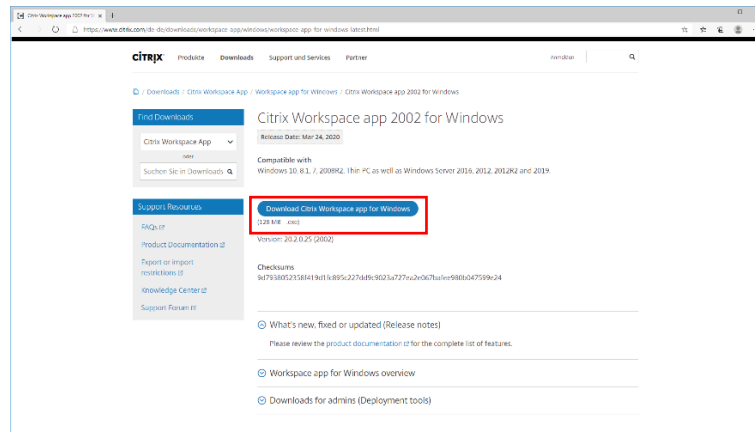
Headset mit Mikrofon

\*Für eine übersichtliche Darstellung empfehlen wir zwei Monitore

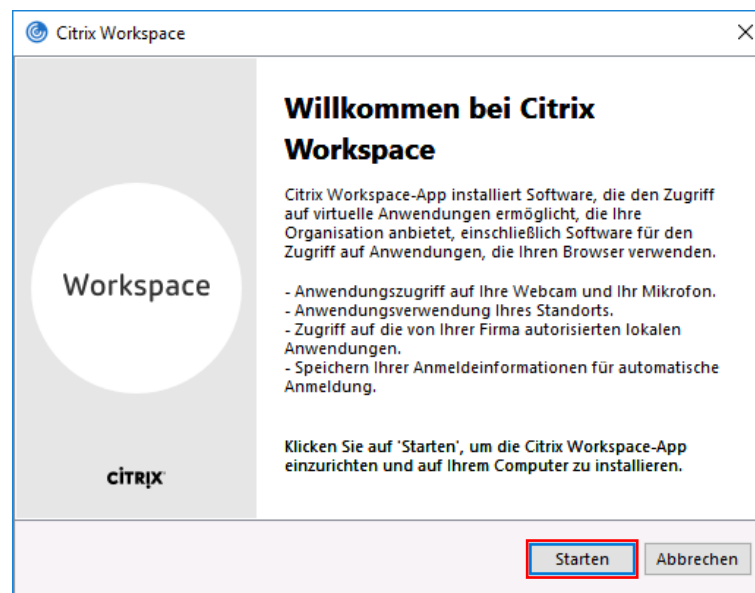
## Schritt für Schritt Anleitung

### Download Workspace

1. Klicken Sie auf den folgenden Link: <https://www.citrix.com/de-de/downloads/workspace-app/windows/>
  
2. Laden Sie die Datei **Citrix Workspace app für Windows** herunter.

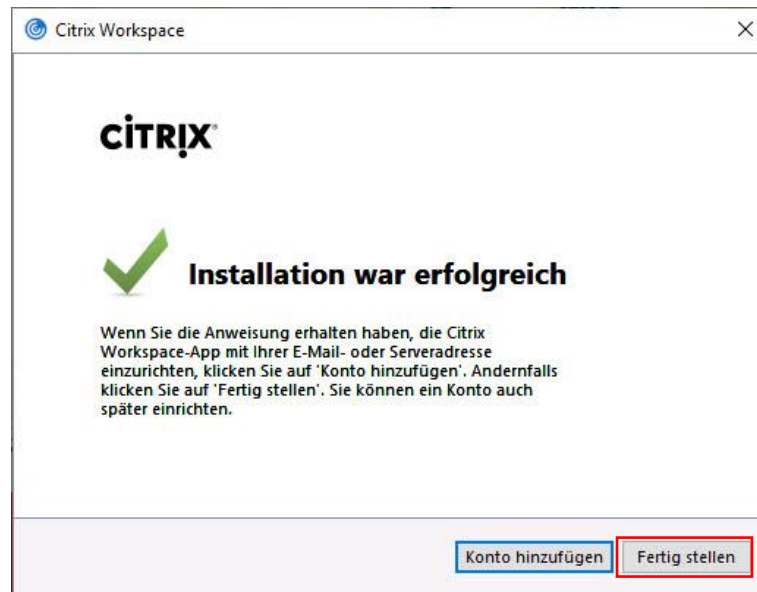


3. Öffnen Sie die heruntergeladene Datei und folgen Sie der Installationsroutine.
  - a. Installieren Sie Citrix Workspace, indem Sie auf den **Starten** Button klicken.



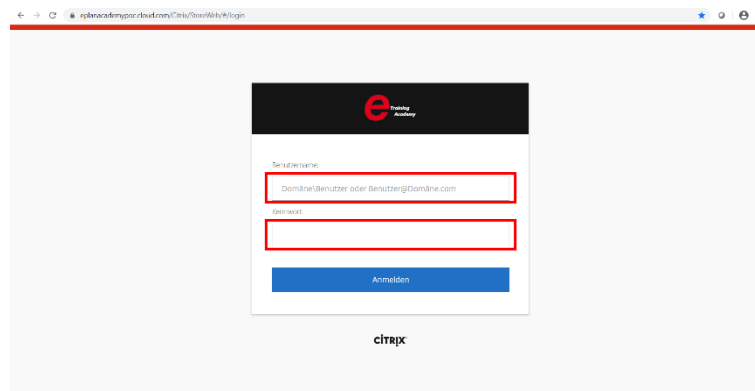
- b. Die erweiterten Funktionen **App-Schutz** und **Single Sign-On** werden für die Teilnahme am Training **nicht** benötigt.

- c. Beenden Sie die Installation, indem Sie auf **Fertig stellen** klicken.



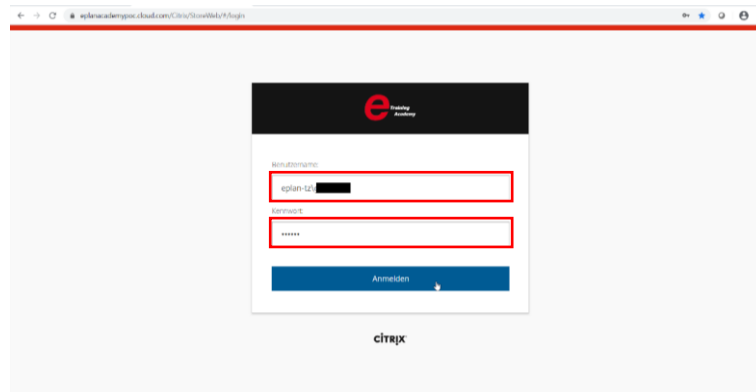
## Citrix Anmeldung

1. Für die Anmeldung an den Seminartagen folgen Sie dem folgenden Link:  
<https://eplanacademypoc.cloud.com/Citrix/StoreWeb/#/login>

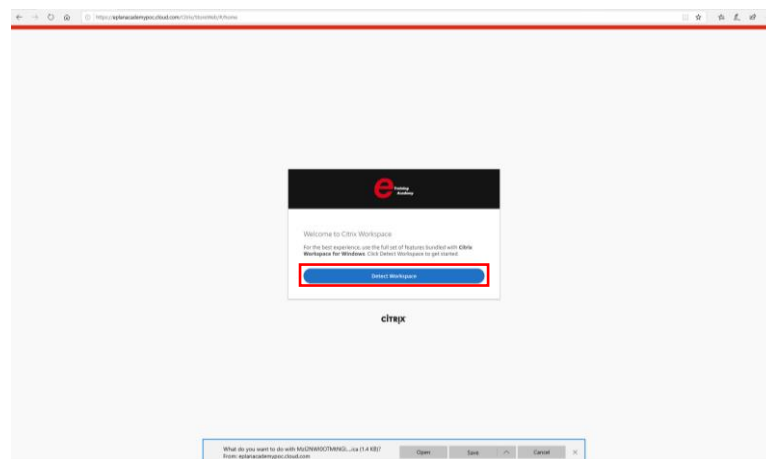


2. Geben Sie Ihre Anmeldedaten ein, die Ihnen beim Seminarstart mitgeteilt werden:
- Benutzername: **EPLAN-tz\Sxxxxx**
  - Passwort: **wird Ihnen am Seminartag durch den Trainer mitgeteilt**

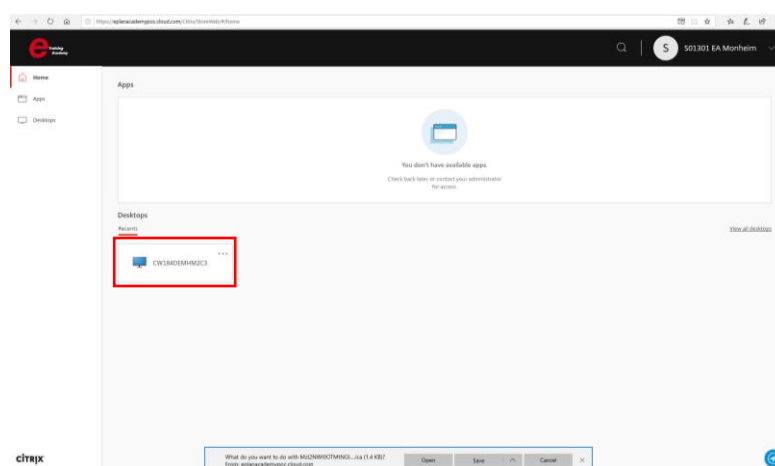
3. Klicken Sie auf **Anmelden**.



4. Klicken sie nach der Anmeldung auf **Detect Workspace**.

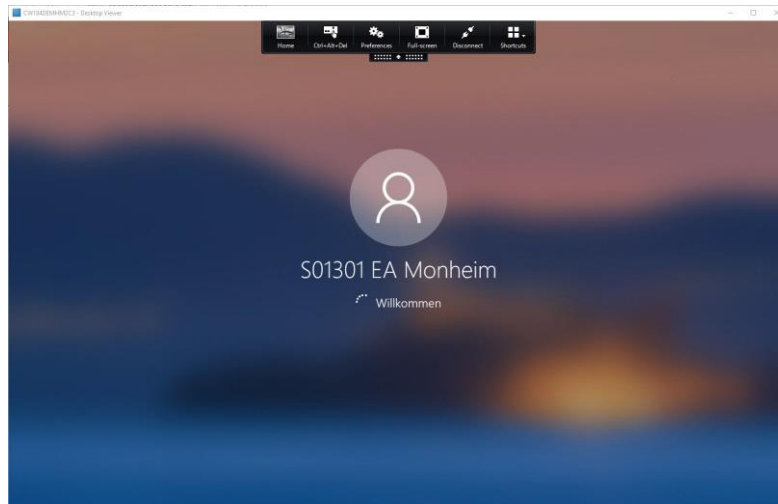


5. Wählen Sie Ihren Desktop aus.





- Die Verbindung zum Citrix Rechner wird hergestellt. Dieser Vorgang kann einige Minuten dauern.



- Sollte es zu einer Fehlermeldung kommen, wiederholen Sie bitte die Schritte 3-5 nochmals. Falls es immer noch zu Problemen kommen sollte, melden Sie sich bei Ihrem Trainer.

## Citrix Rechner

- Damit sich Ihr Citrix Rechner auf Ihren Desktop erweitern kann, maximieren Sie Ihr Citrix Fenster auf dem gewünschten Monitor.
  - Möchten Sie den Citrix Rechner über mehrere Monitore erweitern **ziehen sie das Fenster so auf, dass auf allen Monitoren ein Teil** des Fensters erscheint.
  - Danach **maximieren** Sie das Fenster.
- Um Ihre **Verbindung zu Ihrem Citrix Rechner zu trennen**, gehen Sie auf die schwarze Schaltfläche oberhalb Ihres Citrix Rechners
- Wählen Sie hier **Trennen**. Damit ist Ihre Citrix Sitzung beendet.

## Anhang

### Verwendete Ports der Applikationen

Source	Type	Port	Details
Citrix Receiver	TCP	80/443	Communication with StoreFront
ICA/HDX	TCP	1494	Access to applications and virtual desktops
ICA/HDX with Session Reliability	TCP UDP	2598	Access to applications and virtual desktops EDT protocol requires 2598 to be open for UDP.
ICA/HDX over SSL	TCP	443	Access to applications and virtual desktops
ICA/HDX from HTML5 Receiver	TCP	8008	Access to applications and virtual desktops
ICA/HDX Audio over UDP	UDP	16500-16509	Port range for ICA/HDX audio
IMA	TCP	2512	Independent Management Architecture (IMA)
Management Console	TCP	2513	Citrix Management Consoles and *WCF services Note: For FMA based platforms 7.5 and later, port 2513 is NOT used.
Application/Desktop Request	TCP	80/8080/443	XML Service
STA	TCP	80/8080/443	Secure Ticketing Authority (embedded into XML Service)
Delivery Controller	TCP	89	Used by Secondary Broker when LHC is enabled in 7.12 and above. (This use of port 89 might change in future releases)
*Note: In XenApp 6.5 port 2513 is used by XenApp Command Remoting Services through WCF			